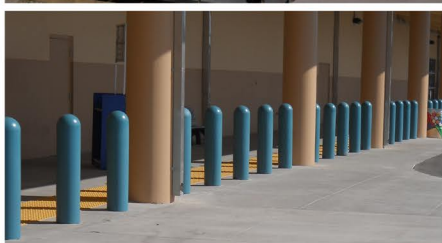
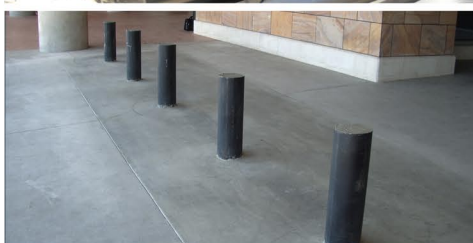
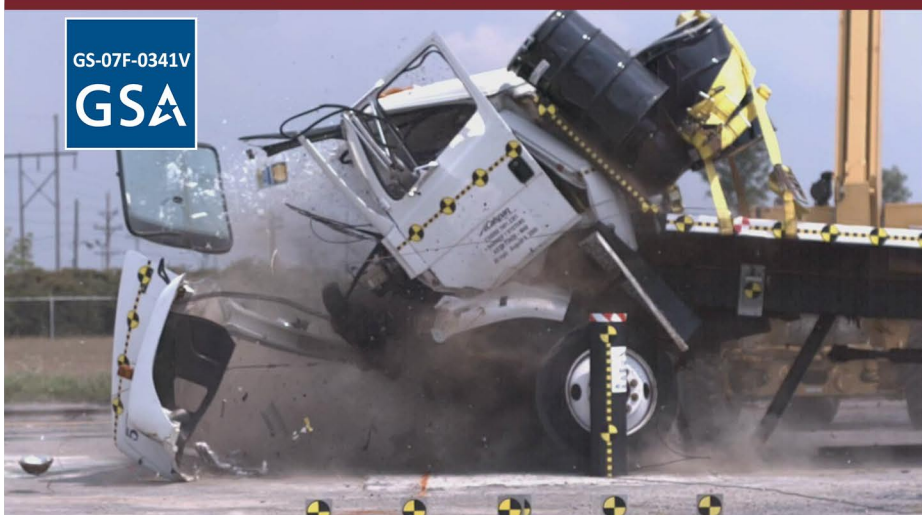


MODEL SMB-800

SHALLOW MOUNT BOLLARDS (ASTM M40 P1)

GS-07F-0341V

GSA



FEATURES AND ADVANTAGES

- ◆ Crash tested and certified with ASTM F2656 M40 P1 rating.
- ◆ One (1) bollard stops 15,000 lb. vehicle at 40 mph in less than 1 meter.
- ◆ Department of Defense (DoD) approved and listed on Anti-Ram Vehicle Barrier List.
- ◆ Shallow foundation only 12" deep avoids underground utilities.
- ◆ Modular prefabricated bollard components are easily installed in field.
- ◆ Cost effective installation using minimal concrete.
- ◆ No field welding, bolted connections, or subgrade preparation required during installation.
- ◆ Easy installation across grade elevation changes and at turns without complication.
- ◆ Bollard array spacing up to 54" on center minimizes number of bollards required.
- ◆ Variety of bollard covers are available including stainless steel, plastic, decorative shapes, concrete, lighted covers, and other custom covers.
- ◆ Drawings, submittals and installation instructions with photos are included.
- ◆ Engineering support included.

BARRIER 1
SYSTEMS, INC.

www.barrier1.us
(336) 617-8478 phone (336) 617-8471 fax

Barrier1 Systems, Inc.
Greensboro, NC USA